

POWER PUSHER™ RAMS

POWER PUSHER RAMS™



Shown: P-25, P-40 Power Pusher Rams in extended and retracted lengths; E-24, E-48 Extenders, and Couplers.

MODEL P-25 AND P-40

- NO HYDRAULICS!
- Features **ZIPNUT®** for fast, easy and safe operation.
- Operates using the spreading power of the Power Hawk® P-16 Rescue Tool or ANY OTHER SPREADER RESCUE TOOL that can fit into the Power Pusher's unique slot arrangement, up to a maximum of 18,000 lbs.
- Safely holds the working load without the use of a dedicated power unit.
- Perform vehicle extrication operations such as "dashboard rolls" safely, quickly, and easily.
- For building collapse situations, extend and lock the Power Pusher manually to stabilize in seconds.
- Assemble Power Pusher Rams back-to-back using an accessory coupling and you've just DOUBLED the fully extended length to more than 80 inches, add the E-48 Extender and reach a length of up to 120 inches.
- Handle adjusts 360° or can be quickly removed to get into those really tight places.

Power Pusher Ram is Patent Pending.

Power Hawk is a registered trademark of Curtiss-Wright Flight Systems, Inc.

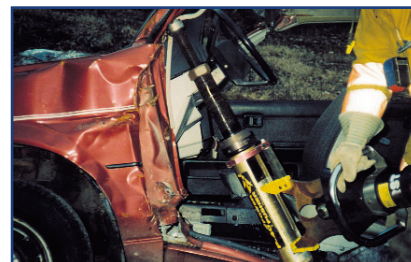


For use in extrication, stabilization and building collapse.



CERTIFIED

COMPLIANT TO NFPA 1938



POWER HAWK®
RESCUE SYSTEMS

CALL

1-800-PWR-HAWK For more information.

Power Hawk Technologies Inc., 300 Forge Way, Suite 2, Rockaway, NJ 07866
Phone: 973-627-4646 · Fax: 973-627-4622 · Website: www.powerhawk.com

Specifications

POWER PUSHER RAMS

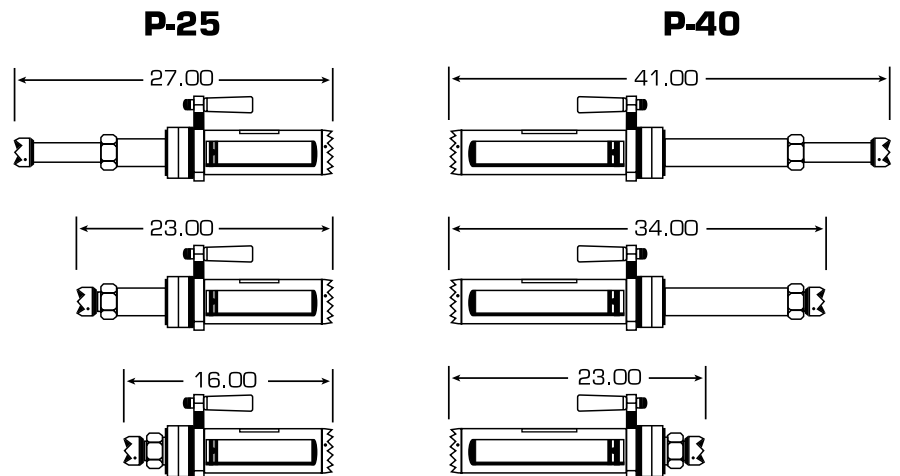
MODEL P-25

Fully extended length:
27 in. (68.6 cm)
Fully retracted length:
16 in. (40.6 cm)
Power stroke length:
5 in. (12.7 cm)
Secondary extender adjustment:
6 in. (15.2 cm)
Slot width:
2.25 in. (5.7 cm)
Weight, including handle: 27 lbs.

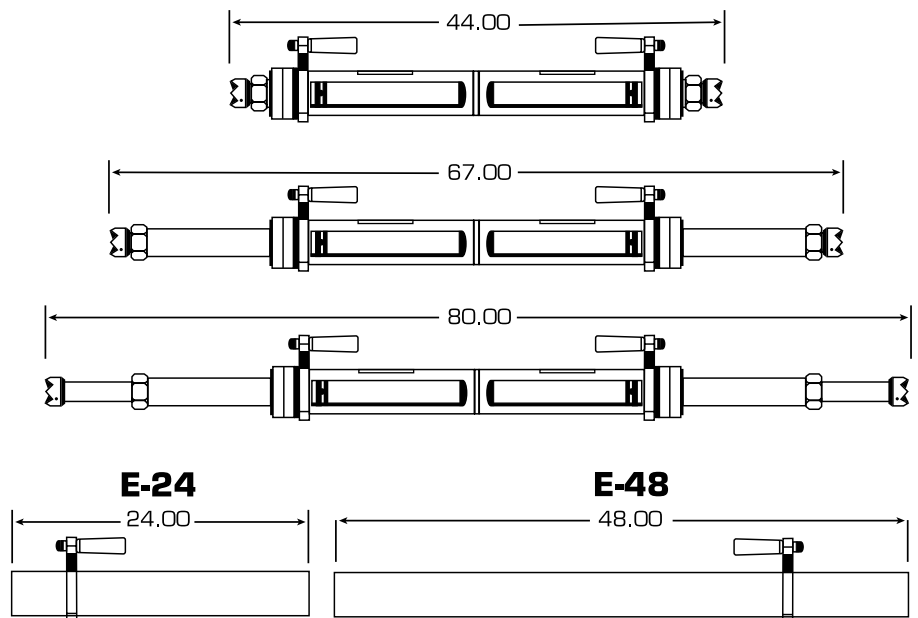


MODEL P-40

Fully extended length:
41 in. (104.1 cm)
Fully retracted length:
23 in. (58.4 cm)
Power stroke length:
12 in. (30.5 cm)
Secondary extender adjustment:
6 in. (15.2 cm)
Slot width:
2.25 in. (5.7 cm)
Weight, including handle: 36 lbs.



P-40 COMBINATIONS



EXTENDERS

MODEL E-24

Length: 24 in. (60.96 cm)
Weight, including handle: 15 lbs.

MODEL E-48

Length: 48 in. (121.92 cm)
Weight, including handle: 30 lbs.



Designed to be used with either the P-25 or P-40.
In combinations these extenders can supply you with up to a 10 ft. extension.